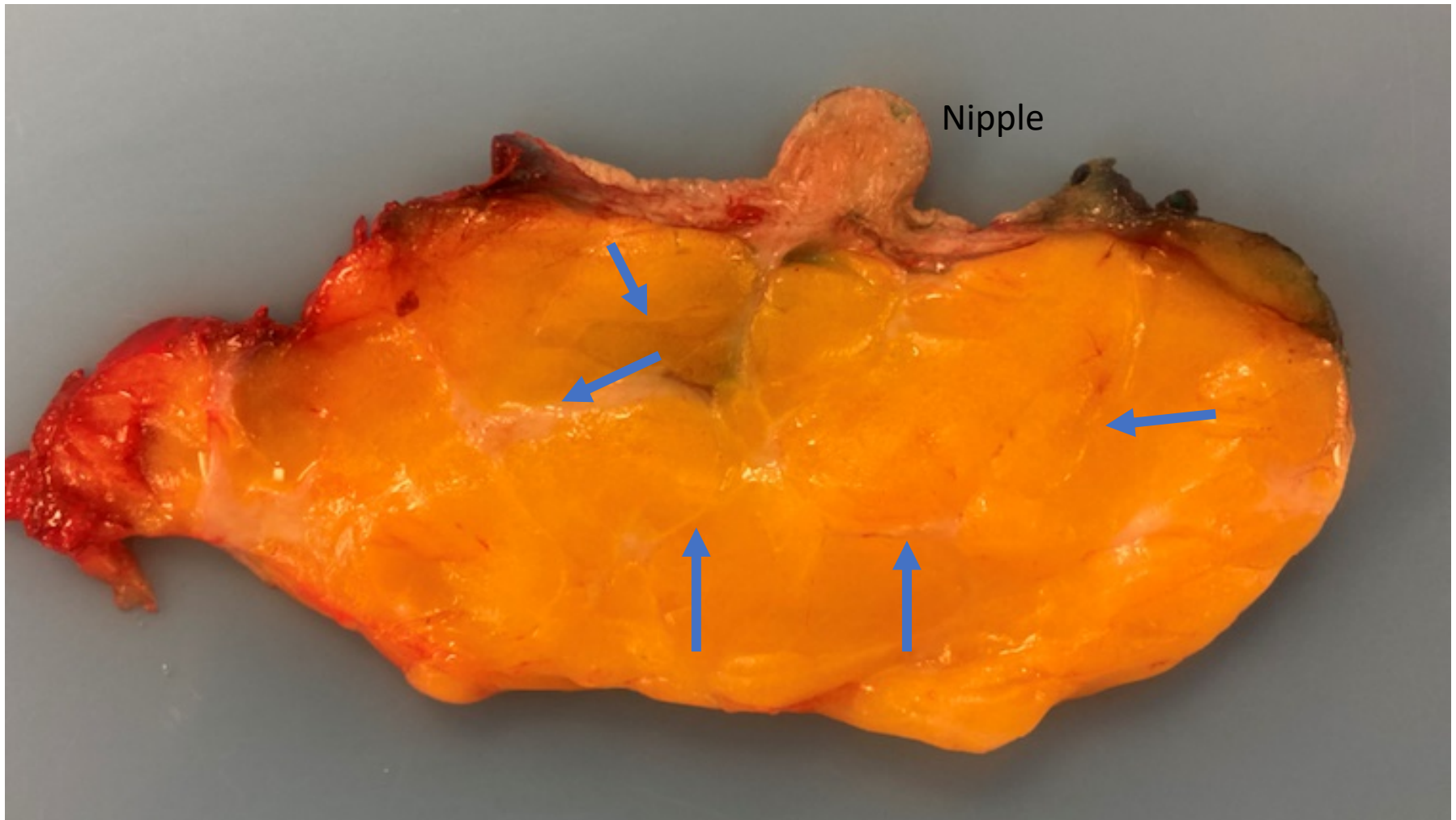


Surgical and Microscopic View of Ductal System

&
Plugging/Mastitis
Insights

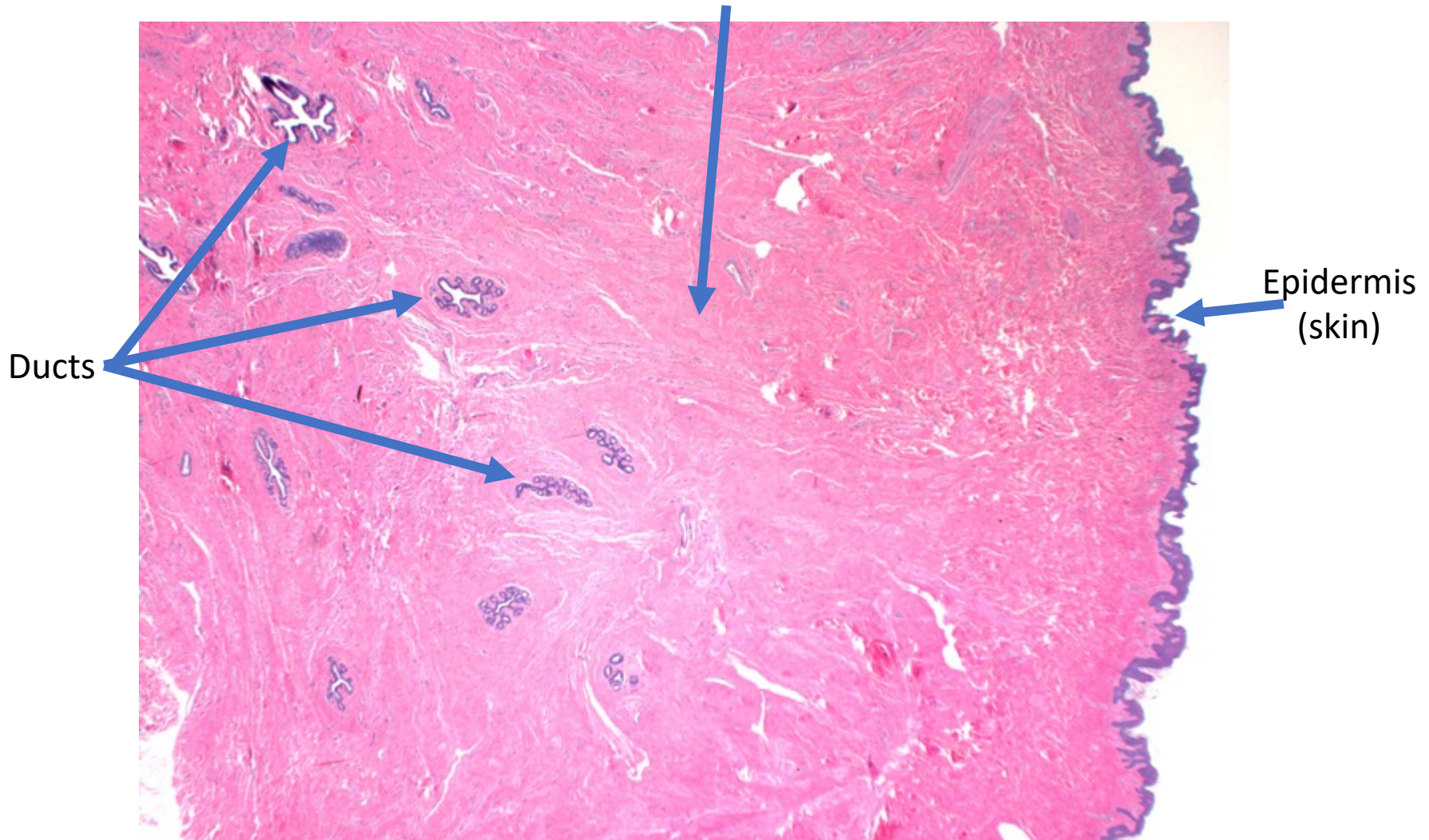
Innumerable, Interlacing Ducts





Low Power Nipple Images

Stroma (pink = supportive/connective tissue)

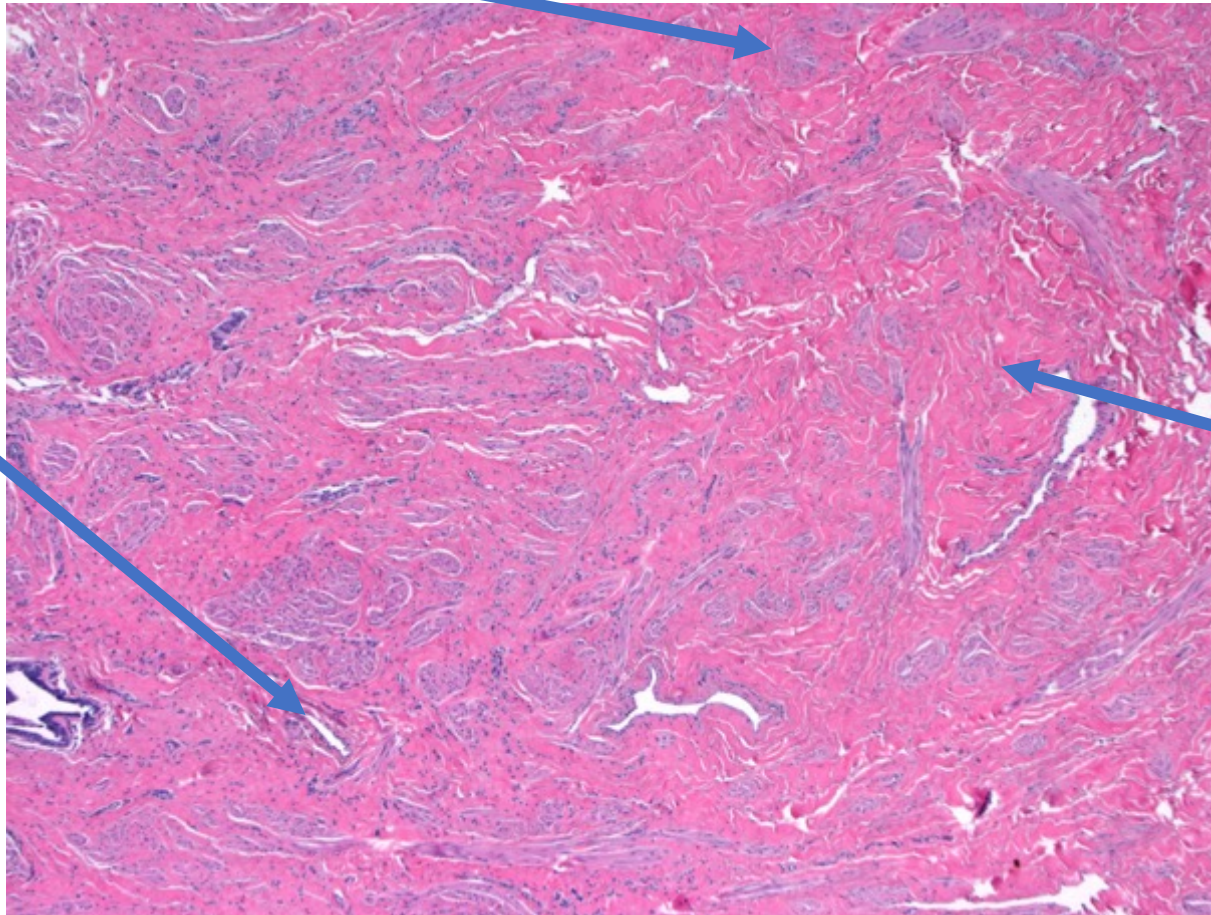


High Power (Zoomed In) Nipple Images

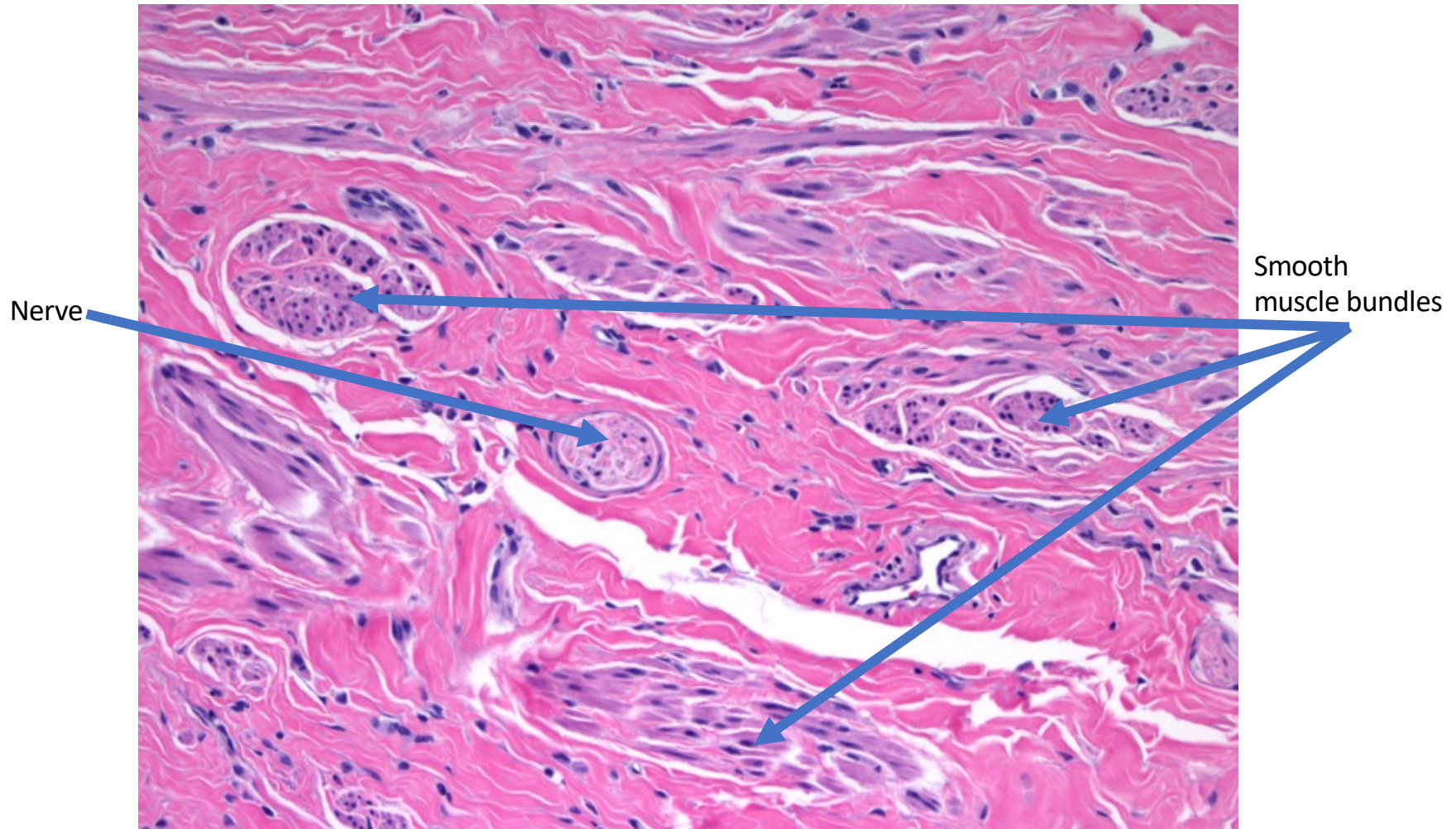
Smooth muscle
(purple bundles)

Ducts

Dense
collagen
(pink)



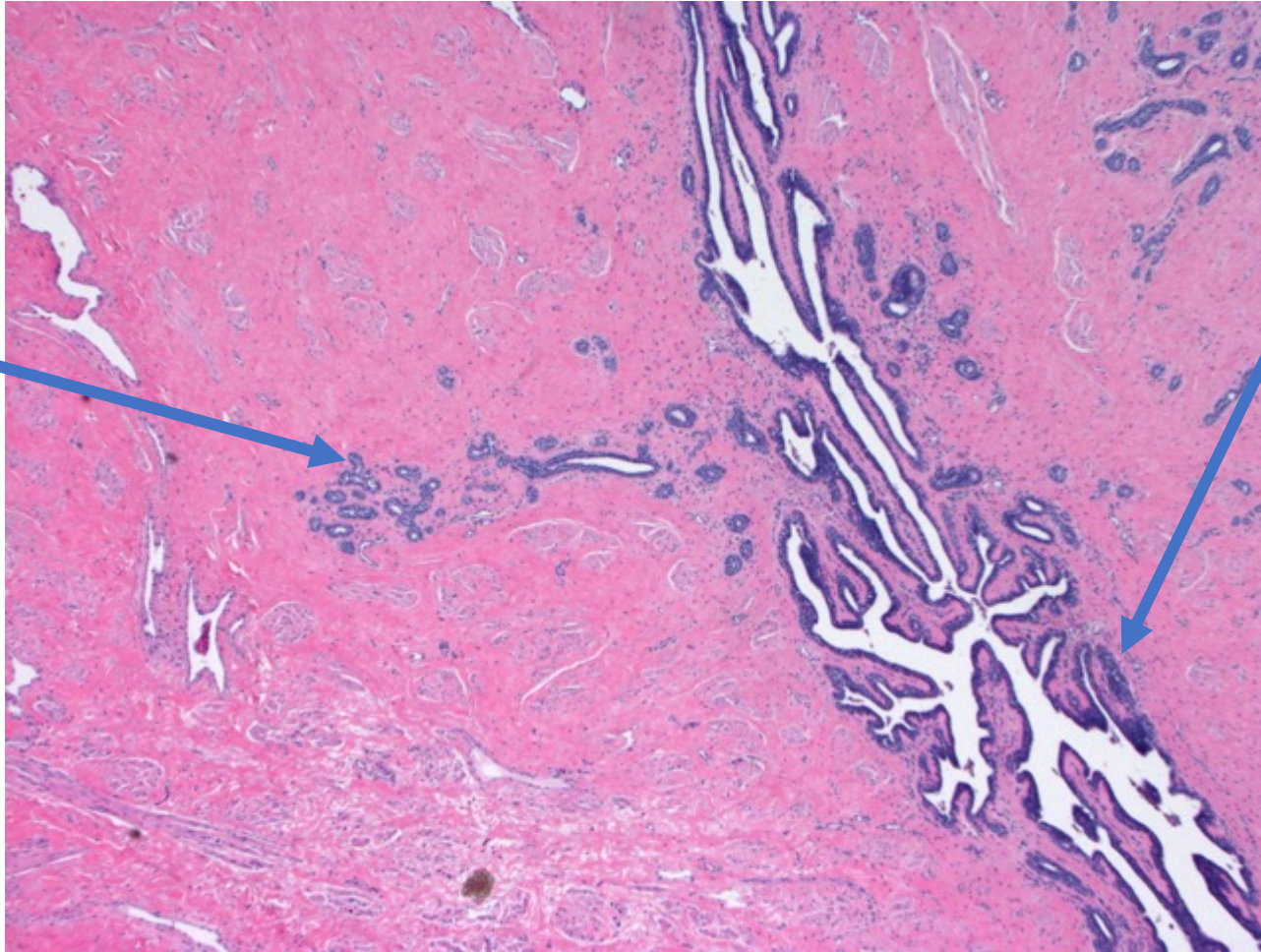
High power: Dense Collagen, Smooth Muscle, Nerves



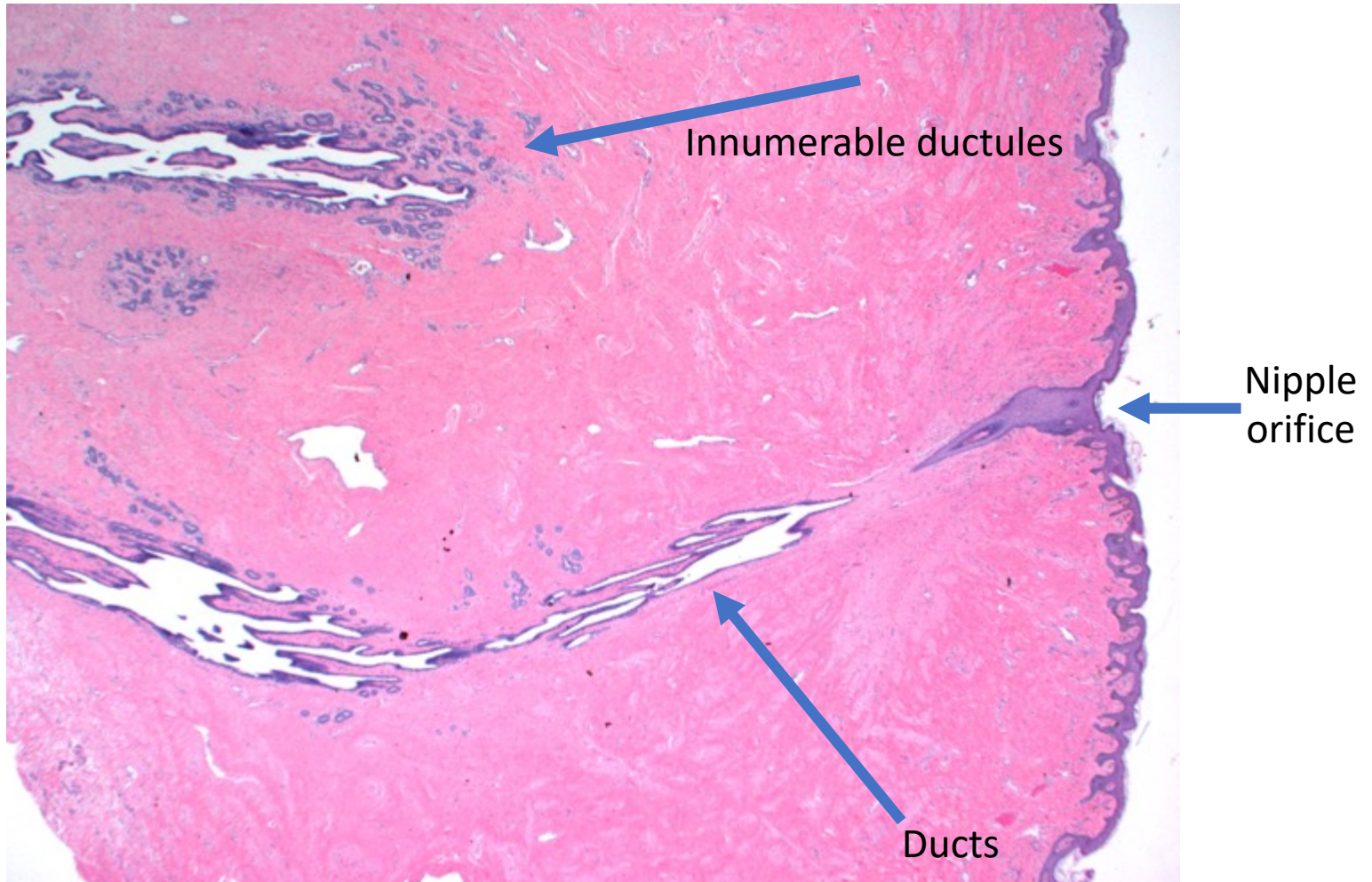
Small Ducts Feed Into Larger Central Ducts

Ductules

Ducts

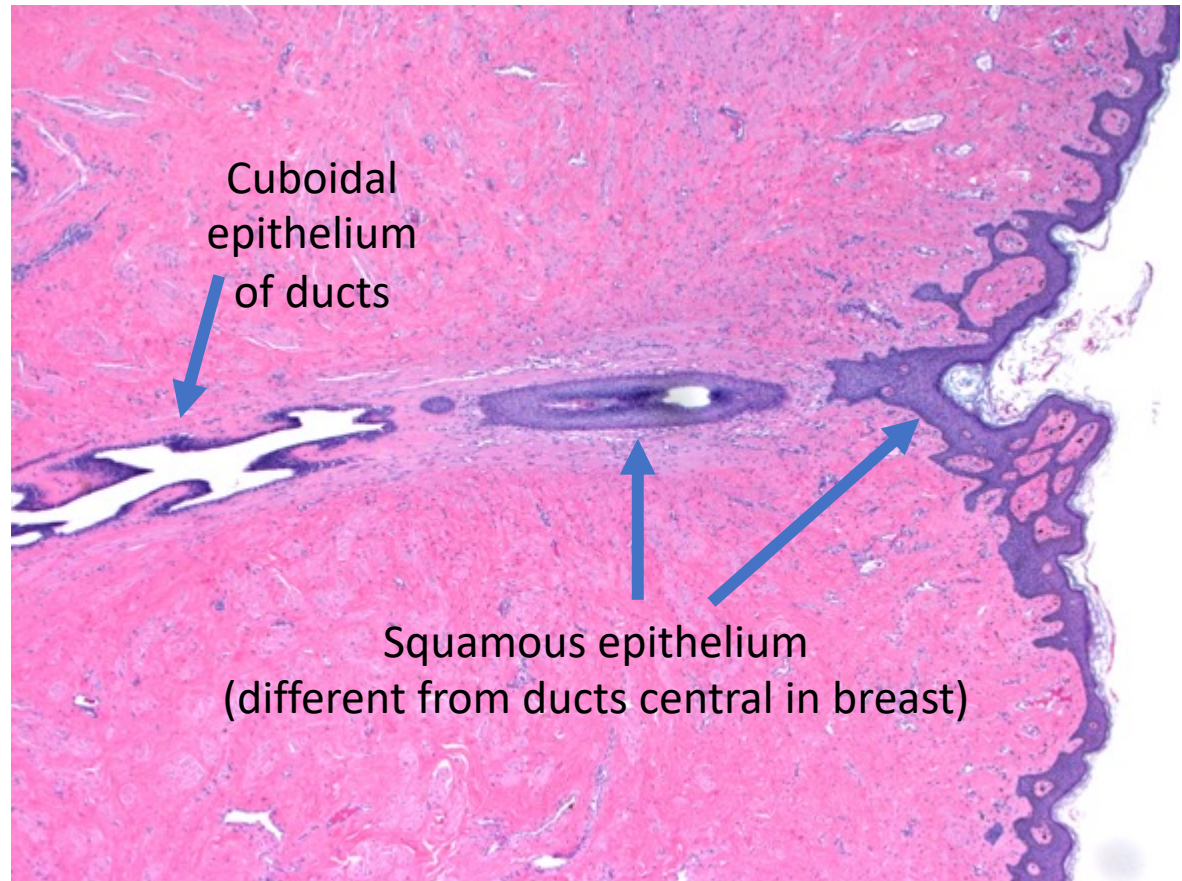


Ducts Running Up Towards Nipple Orifice

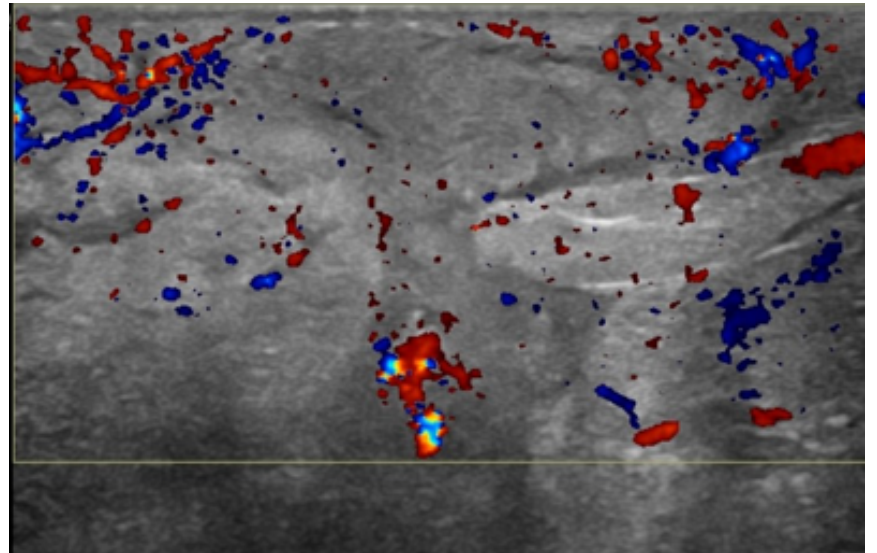


Duct Exiting through Nipple Orifice

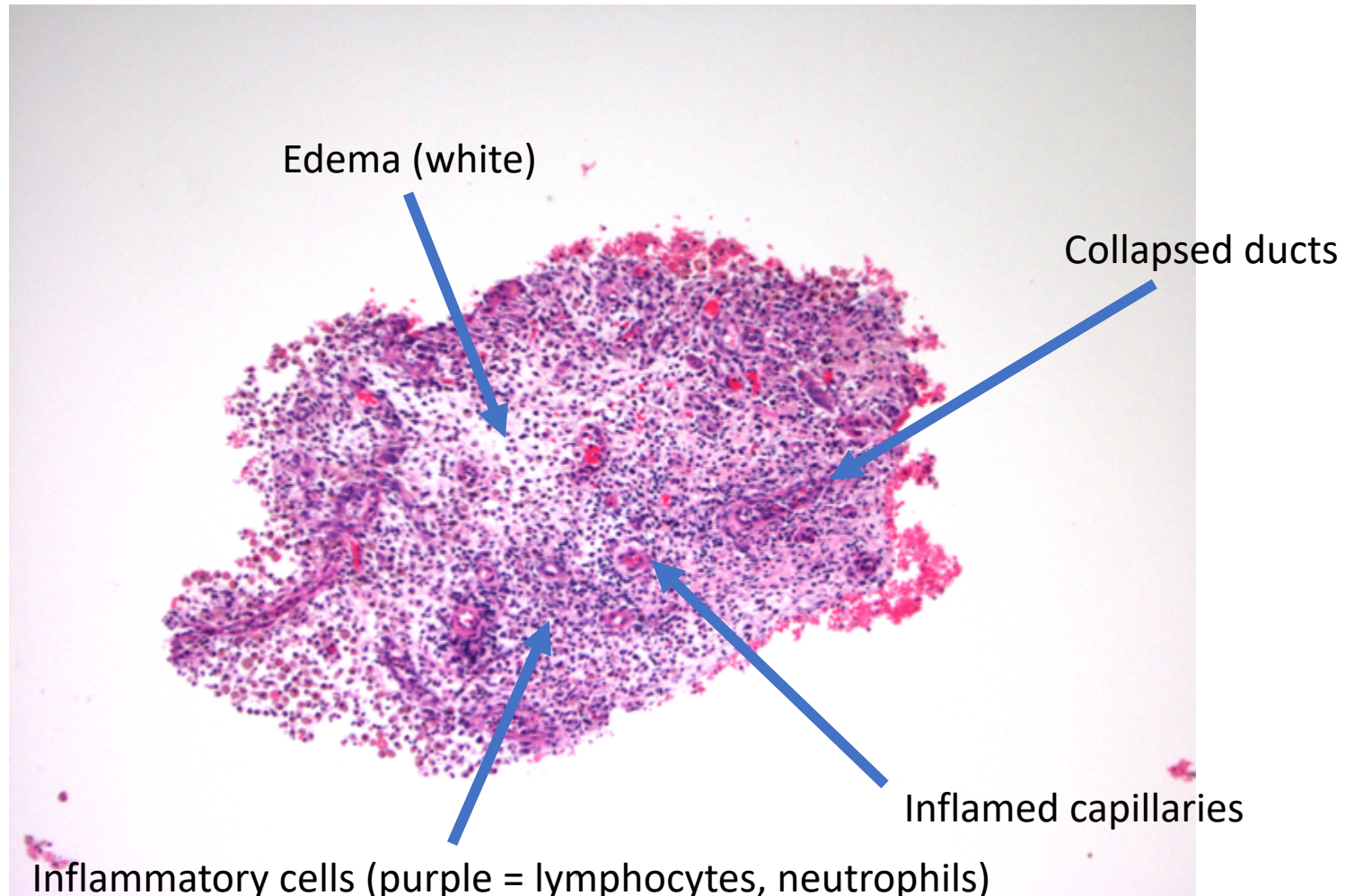
- Squamous epithelium colonizes last 1-2 mm of the duct
- Extensive squamatization = squamous metaplasia



Mastitis



Inflammatory Cells, Edema, Inflamed Capillaries, Collapsed Ducts



Inflammatory Cells, Edema, Inflamed Capillaries, Collapsed Ducts

